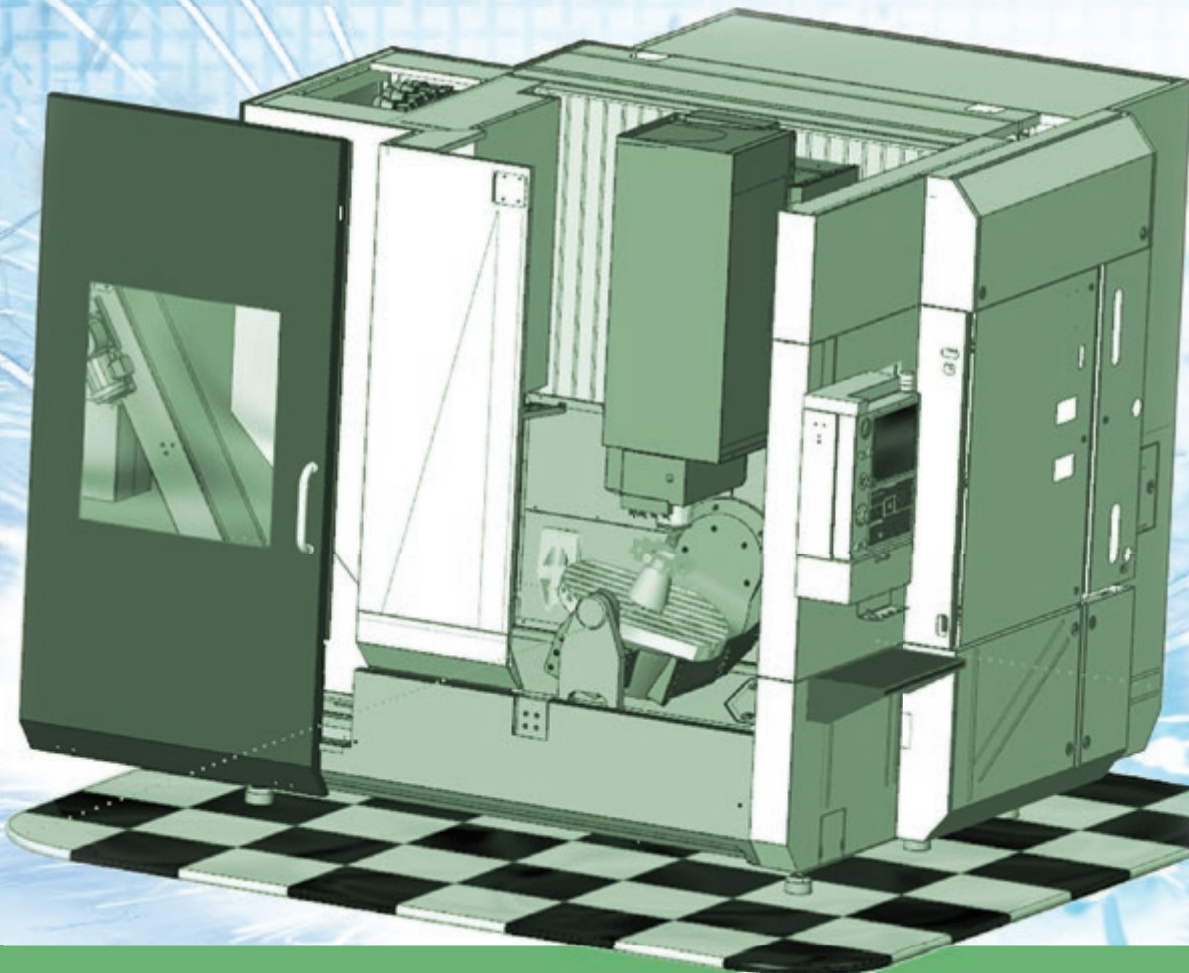


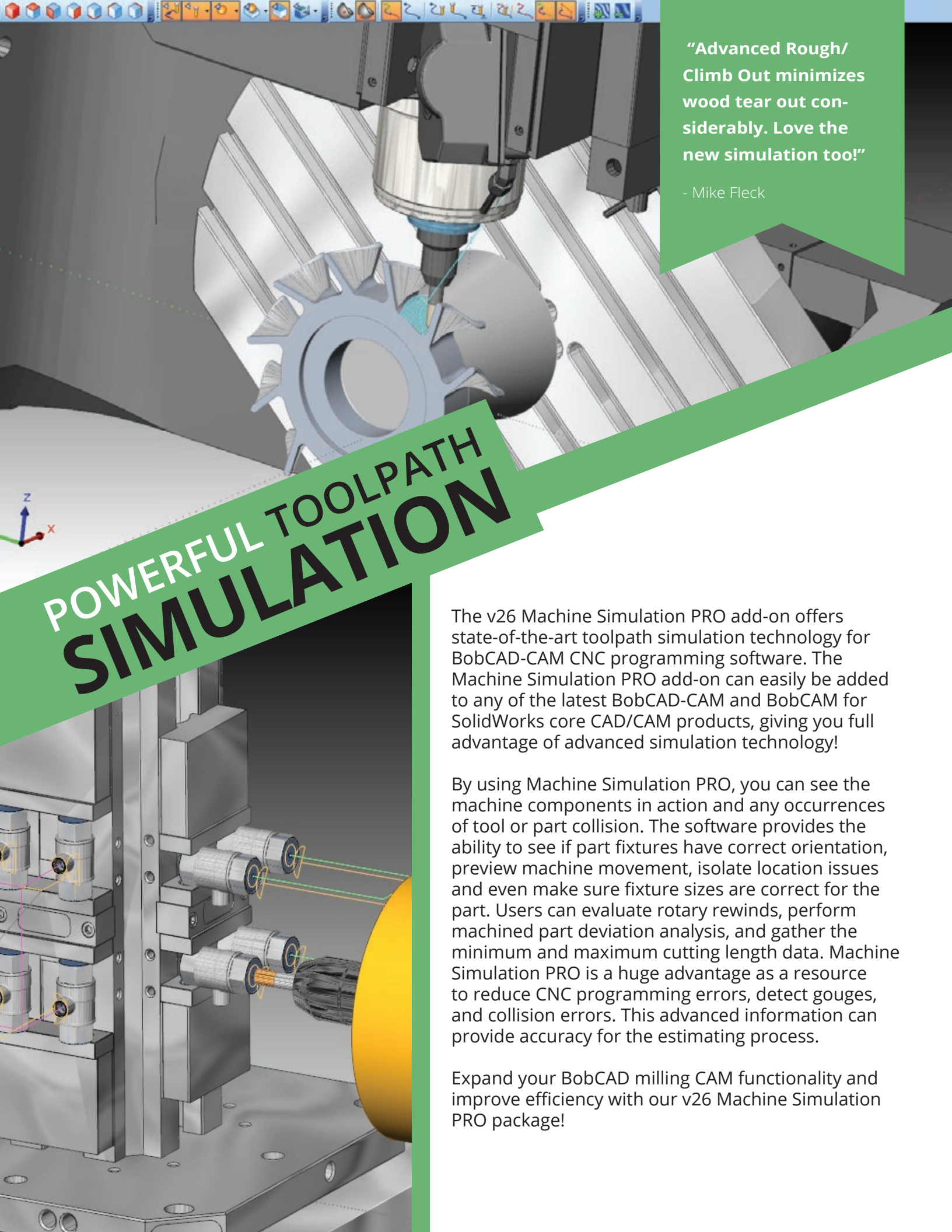
STATE-OF-THE-ART  
TOOLPATH  
SIMULATION  
SOFTWARE



# v26 MACHINE

SIMULATION PRO

BobCAD-CAM™ 



**“Advanced Rough/  
Climb Out minimizes  
wood tear out con-  
siderably. Love the  
new simulation too!”**

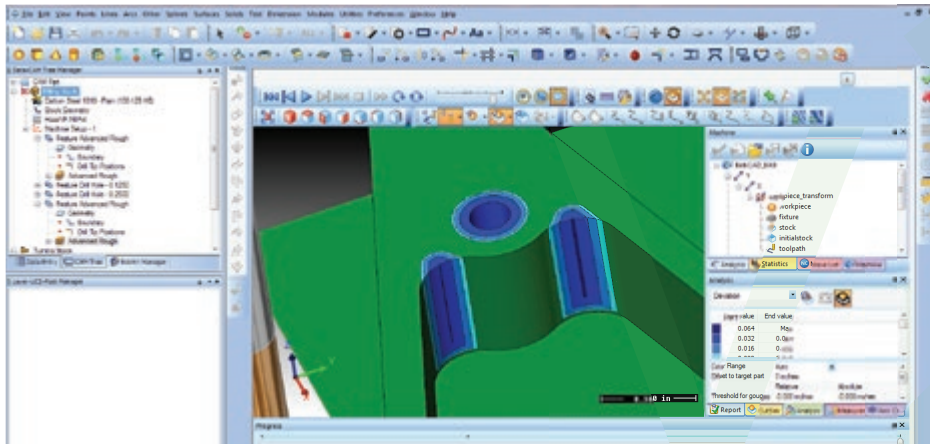
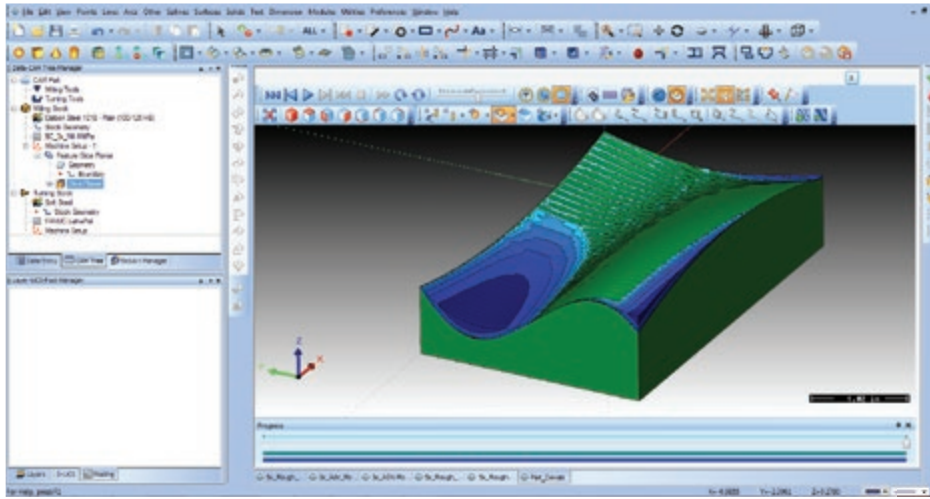
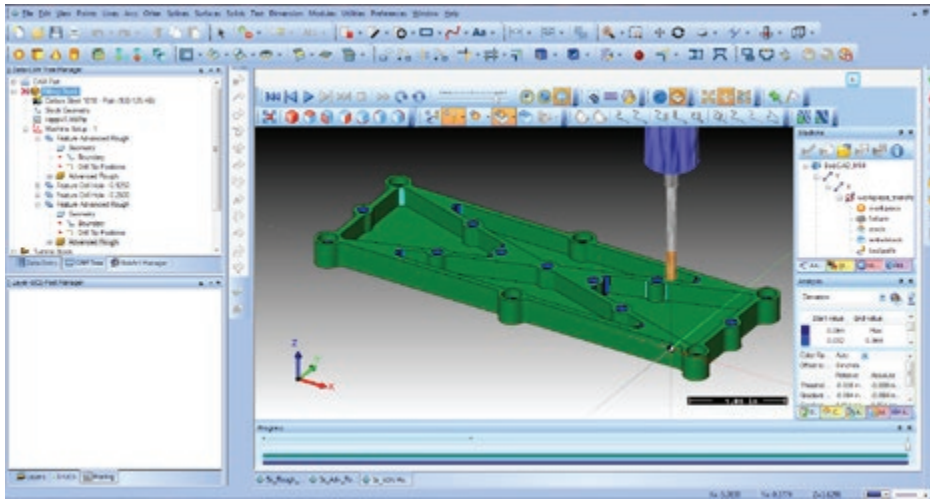
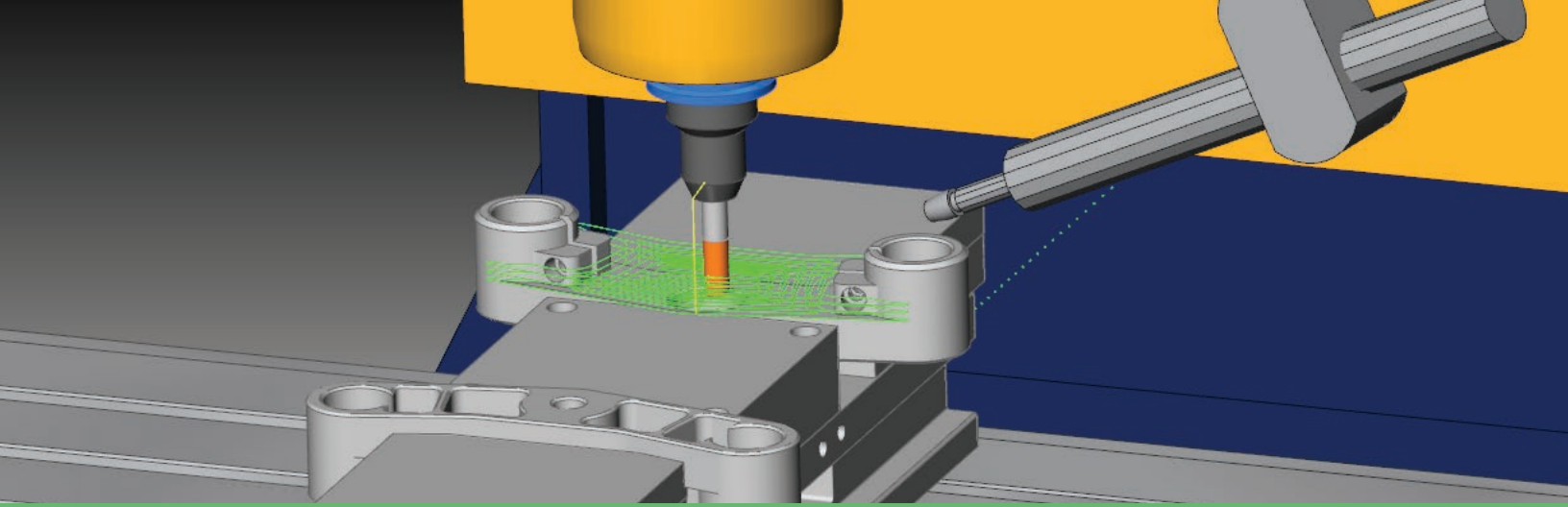
- Mike Fleck

# POWERFUL TOOLPATH SIMULATION

The v26 Machine Simulation PRO add-on offers state-of-the-art toolpath simulation technology for BobCAD-CAM CNC programming software. The Machine Simulation PRO add-on can easily be added to any of the latest BobCAD-CAM and BobCAM for SolidWorks core CAD/CAM products, giving you full advantage of advanced simulation technology!

By using Machine Simulation PRO, you can see the machine components in action and any occurrences of tool or part collision. The software provides the ability to see if part fixtures have correct orientation, preview machine movement, isolate location issues and even make sure fixture sizes are correct for the part. Users can evaluate rotary rewinds, perform machined part deviation analysis, and gather the minimum and maximum cutting length data. Machine Simulation PRO is a huge advantage as a resource to reduce CNC programming errors, detect gouges, and collision errors. This advanced information can provide accuracy for the estimating process.

Expand your BobCAD milling CAM functionality and improve efficiency with our v26 Machine Simulation PRO package!



## FEATURES INCLUDE

- Display full machine operation during simulation to better visualize parts being cut
- Set machine travel limits and detect over travels in simulation
- Use machine kinematics for full machine simulation
- Calculate Cycle Times
- Gain Toolpath/Operation/Sequence Analytics
- Eliminate Costly Programming Mistakes, Gouges & Collision Errors
- Visualize the Machining Process, Fixture Orientation & Machine Movements
- Dynamic Machine/Material/Tool Viewing
- Dynamic Elements/Workpiece & Holder Tree
- Simulation Play Controls
- Deviation Analysis
- Toolpath Mode/Material Mode
- Time Based Mode/Length Based Mode
- Works with your STL stock

## BobCAD-CAM, Inc.

As a worldwide leader in developing innovative solutions for CNC part programming, BobCAD-CAM remains at the forefront in providing both small and large shops with powerful and affordable CAD/CAM products. BobCAD-CAM software delivers cutting-edge CAD/CAM technology for shops looking for an affordable solution in toolpath and G-code programming.

## SYSTEM REQUIREMENTS

### Windows (Minimum)

- 1GB RAM
- 128 MB Graphics Adapter\*
- Intel® or AMD® Processors\*\*
- 2GHz Processor
- Windows Vista or Windows 7

### Windows (Recommended)

- 6GB RAM or more
- 1GB Graphics Adapter\*
- Intel® or AMD® Processors\*\*
- 2+GHz Processor (Multi-core)
- Windows 7 x64

### Recommended Vs. Minimum:

The minimum specifications shown mean that BobCAD-CAM software will open and work, however, the minimum requirements do not gauge performance and stability. For BobCAD-CAM to perform reliably at its best, it is highly recommended to meet or exceed the recommended specifications.

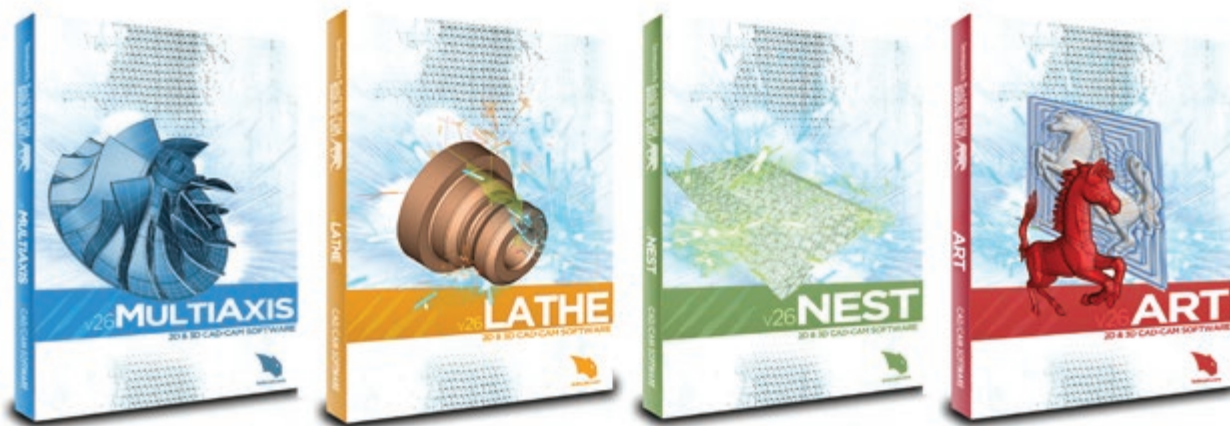
Note: Although initial testing has shown that BobCAD-CAM V26 runs on Windows XP SP3, Windows XP is no longer officially supported.

\*BobCAD-CAM's stability is dependent on the graphics card ability to process information. Integrated memory graphics cards may work but are not recommended.

ATI® or NVIDIA® graphics cards with dedicated memory are recommended. The graphics card's software driver must be updated to the current software drivers released by the graphics card manufacturer.

\*\*BobCAD-CAM is not supported on Apple Macintosh® -based machines. Some customers have shown success in running BobCAD-CAM in a Virtual Windows environment on Mac computers using Boot Camp. While the end user may choose to run Windows on a MAC®, this is not supported by BobCAD-CAM Inc.

## EXPAND YOUR CAPABILITIES!



### BobCAD-CAM UK

Office 3  
Evans Business Centre  
Dane St, Rochdale OL12 6XB  
Contact: Peter Gillespie

TEL: 01706 861717 MOB: 07775 860661